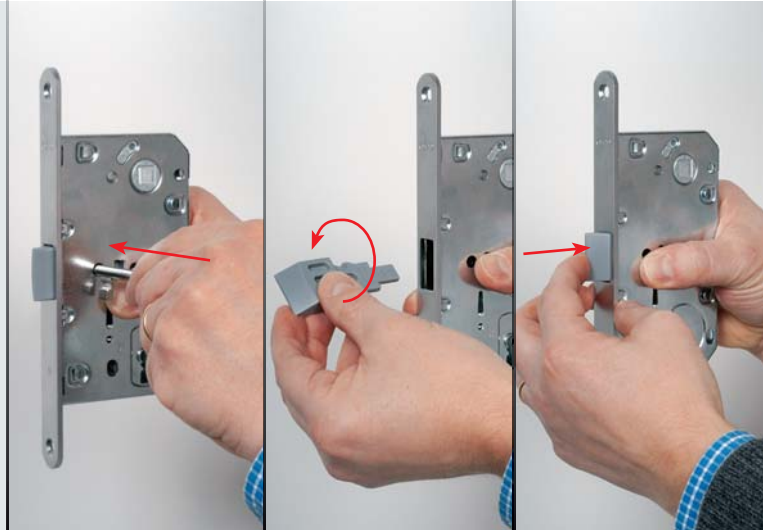


QUICK LATCH®

...and the handing changes

QUICK LATCH® is a new patented fast latch coupling system: just a few seconds to extract it, to orient it according to the door handing and to insert it again in its seat.

QUICK LATCH® is the only latch-system with auto-guided sliding.



*Polyamide
latch version*



*Metal latch
version*

The latch-bolt reduces the milling in the frame, notably improving beauty and reducing working time.

